

Rovaniemi, FINLAND 23.-27.3.2020

WORLD UNIVERSITY

# SKI ORIENTEERING CHAMPIONSHIP



SKI  
ORIENTEERING  
2020

FISU World University  
Championship

Rovaniemi  
Finland

BULLETIN



OLYMPIC TRAINING CENTER ROVANIEMI

**SANTA  
SPORT**



Suomen  
Suunnistusliitto



FISU

An aerial photograph of a snowy landscape in Rovaniemi, Finland. In the center, there is a large, modern sports complex with several buildings, including a large white dome and a colorful multi-story building. The area is surrounded by dense evergreen forests. The word "Foreword" is overlaid in large white letters across the middle of the image.

# Foreword

Rovaniemi has been host of an international university sport event once before, in 1970, Winter Universiade, known as Polar Universiade - took place at Arctic Circle. After those days, Rovaniemi has hosted numerous sports events in several different sports. Primarily known as winter sport city, Rovaniemi is also an established summer sport organiser.

In Finland we have several successful ski orienteering athletes. Luckily, the organisers of the WUC Ski-O 2020 now have a gold medal winner from WUC 2016 Tula, Russia, as a member of Organising Committee. Ms. Sonja Mörsky is currently studying in Santasport Institute as a Sport Assistant. Sonja will do her competence test in Organising a sport event -studies in this event. You will find Sonja from the cover of this bulletin.

Upcoming Ski Orienteering University Championship will take place in surroundings of beautiful Ounasvaara hill, "living room" for locals, a stone's throw away from city centre. We have already done a lot of preparations for the event, yet there is a lot of things to do. As a hometown of Santa Claus, we have naturally told Santa where to be at the end of next March. Anyway everything will be ready and settled for the athletes, team officials and everyone else when Championship starts.

**Organisers of the WUC Ski Orienteering 2020 warmly welcome you to the Championship and Arctic Circle!**

*Jarkko Komulainen  
President of the Organising Committee*







# City of Rovaniemi

City of Rovaniemi, the Capital of Finnish Lapland, is located on the Arctic Circle. It is also known as the official home town of Santa Claus. In the past few decades Rovaniemi has grown into a busy and active town with a population over 61 000. Rovaniemi is also the educational center of Lapland and there are two universities located in Rovaniemi. The University of Lapland is the northernmost university in Finland and in the European Union. Lapland University of Applied Sciences has its home base in Rovaniemi as well. The number of university students in Rovaniemi is somewhere around 8 000 which tells about the importance of universities for the city of Rovaniemi.

Santasport, Olympic training center of Rovaniemi is located only 2 km from the city center and 10 km from the airport. Rovaniemi Train station, as well, is situated only 3.5 km from the Event center. Santasport will be the accommodation, dining and competition center for the championship. Ounasvaara Hill provides various ski orienteering terrains.

During the snowy spring time, March is one of the best times to do winter sports in Rovaniemi. The amount of daylight starts to increase dramatically in the end of February and the snowy landscapes bathe in the bright springtime sun. In March, the typical temperature is -5 degrees Celsius with eight precipitation days a month. Snow season in Rovaniemi is from November to the early May.



## ORGANISERS

On behalf of the International University Sports Federation (FISU), the World University Ski Orienteering Championship 2020 will be organised by

- Santasport Olympic Training Center Rovaniemi
- Finnish Olympic Committee
- Finnish Orienteering Federation

in co-operation with

- Finnish Student Sports Federation
- City of Rovaniemi
- Ounasvaara Ski Club

## DRAFT SCHEDULE

DATE		PROGRAMME
<b>Fri-Sat</b>	<b>20.-21.3.</b>	<b>Arrivals and accreditation</b>
<b>Sun</b>	<b>22.3.</b>	<b>Accreditation, Model Event, 1st General Technical meeting, Opening ceremony</b>
<b>Mon</b>	<b>23.3.</b>	<b>WUC Ski-O Sprint</b>
<b>Tue</b>	<b>24.3.</b>	<b>WUC Ski-O Pursuit</b>
<b>Wed</b>	<b>25.3.</b>	<b>WUC Ski-O Rest Day, cultural activity</b>
<b>Thu</b>	<b>26.3.</b>	<b>WUC Ski-O Mass start</b>
<b>Fri</b>	<b>27.3.</b>	<b>WUC Ski-O Mixed relay, Closing ceremony, Banquet</b>
<b>Sat</b>	<b>28.3.</b>	<b>Departures</b>

## COMPETITION RULES

The FISU Regulations for World University Championships and the latest Competition Rules for the IOF Orienteering events will be followed in the event.

**[www.wucskio2020.com/regulations](http://www.wucskio2020.com/regulations)**



# PARTICIPANTS

**Only the competitors who satisfy the following conditions may take part in a FISU World University Championship:**

- Must be a national of the country they represent
- Must be at least 18 and no older than 25 years of age on the 31st December of the year of the event; for 2020, athletes must be born between the 01/01/1995 and the 31/12/2002.
- Have to be students who are currently officially registered as proceeding towards a degree or diploma at a university or similar institute whose status is recognised by the appropriate national academic authority of their country;
- Have to be former students of the institutions mentioned in a) who have obtained their academic degree or diploma in the year preceding the event;

Each country may enter a maximum of twenty-one (21) persons: sixteen (16) competitors (with a maximum of eight (8) men and eight (8) women) and five (5) officials.

**Each country may enter in:**

Middle distance: - six (6) men and six (6) women

Sprint distance: - six (6) men and six (6) women

Pursuit distance: - six (6) men and six (6) women

Sprint relay: - two (2) teams of two (2) athletes (at least one (1) women per team)

At the first General Technical Meeting, the Head of Delegation or his/her representative shall confirm and sign the official list of competitors accredited by the CIC.

## REGISTRATION AND FEES

### DEADLINES FOR ENTRIES

<b>General Entries</b>	<b>By 23th September 2019</b>
<b>Quantitative Entries</b> <b>25 % deposit of participation fees</b>	<b>By 23th of December 2019</b>
<b>Individual Entries</b> <b>Travel schedules of the delegations</b> <b>Media Individual Entries</b>	<b>By 23th of February 2020</b>
<b>Balance of participation fees</b>	<b>Upon arrival/by invoice</b>
<b>Final confirmation of competitors</b>	<b>At 1st General Technical Meeting</b>

All the general, quantitative and individual entries as well as travel schedules for each person should be filled in online, using FISU's online accreditation system at: <https://accreditation.fisu.net/Pages/Home.aspx>.

FISU has provided all National University Sports Federations the passwords for the system. Entries for the 2020 World University Championships will be possible starting from July 2019.

The Organizing Committee would like to emphasize already at this early stage the great importance of following the deadlines for the entries. Entries arriving after the expiration of the required deadlines will not be taken into consideration.

## FISU Registration Fees

FISU shall receive from each competing country the following FISU registration fees:

- **member-associations of FISU: 20 euros (€) per participant**
- **non-member associations: 40 euros (€) per participant**

These fees will be invoiced to the participating delegations by FISU.

Participation Fees to the Organizing Committee (full board and event services):

- **a participation fee of 70 euros (€) per person per night**
- **extra officials will pay a participation fee of 140 euros (€) per person per night**

The Organizing Committee will provide you with invoices by request for the payment of the participation fees or the fees may be paid to the following bank account:

Santasport Finland OY  
SWIFT: OKOYFIHH  
IBAN: FI87 5645 0020 0015 33

## VISA Requirements and travel documents accepted by Finland

The Schengen states have jointly agreed which countries' citizens are required to present a visa. Each Schengen state decides which passports and travel documents it accepts from different countries' citizens.

Even if you did not need a visa to visit Finland, you need a valid passport or some other travel document accepted by Finland. It must be valid for at least ninety days after your intended date of departure from the Schengen area.

In addition, the passport or other travel document must have been issued no later than ten years ago.

In case you do not need a visa, you can stay in Finland or in the territory of other Schengen state for ninety days in any 180-day period.

For more information on visa requirements and travel documents accepted by Finland please visit: <http://formin.finland.fi/public/default.aspx?nodeid=15720>

Visas have to be applied for at your nearest Finnish Embassy. For a list of Finland's missions abroad, please visit: <http://formin.finland.fi/public/default.aspx?nodeid=17195&contentlan=2&culture=en-US>

*Please remember to start your visa application procedure in time!*

## ACCREDITATION

The accreditation office will be at Santasport center. All participants must obtain accreditation from International Control Commission of FISU and from the Local Organising Committee (LOC).

## MEDICAL

The organising committee provides first-aid and necessary medical care for athletes and all accredited persons. The Lapland Central Hospital is located right next to the event centre.

Doping controls will be organised during the Championship by the Finnish Antidoping Agency in accordance with the FISU and the IOF guidelines.







# Competition

## Terrain description

The terrain consists of a small number of hills/tops. The competition area is between 80 and 203 m above sea level. The terrain is almost 100% forest, mainly evergreen, with only a limited area of private family houses and a few roads.

Ounasvaara area has over 100 km 5-10 m wide ski tracks, some tracks for walking and biking in winter time and also a ski jumping hill and a small downhill ski slope in the northern side of Ounasvaara mountain. Rovaniemi has a subarctic climate between the warm Gulf stream in the west and the continental mass to the east. It experiences long and cold winters.







## Embargoed area

With reference to the Competition Rules for IOF Ski Orienteering Events, the listed areas are out of bounds for all potential WUC Ski-O 2020 team members (competitors, team leaders, coaches, doctors, escorts, etc.) and other persons who, through their knowledge of the terrain or the events, may influence the result of the competitions being held during WUC Ski-O 2020. Spelt out in detail this means:

- no organized orienteering activities may take place in these areas.
- no training sessions, i.e. running/races, testing routes may take place in these areas.
- no one with potential connection to a team (athletes or others) may visit the embargoed areas.

Embargoed area is displayed on a map below. Between Santasport and Toramo team members can use skiing track for training and warm-up before competition (green line on a map). Inside the embargoed area, team members can use first snow skiing track for training until 31st of January in 2020 (blue line on a map).

Restriction of using embargoed area starts from December 1st in 2019.

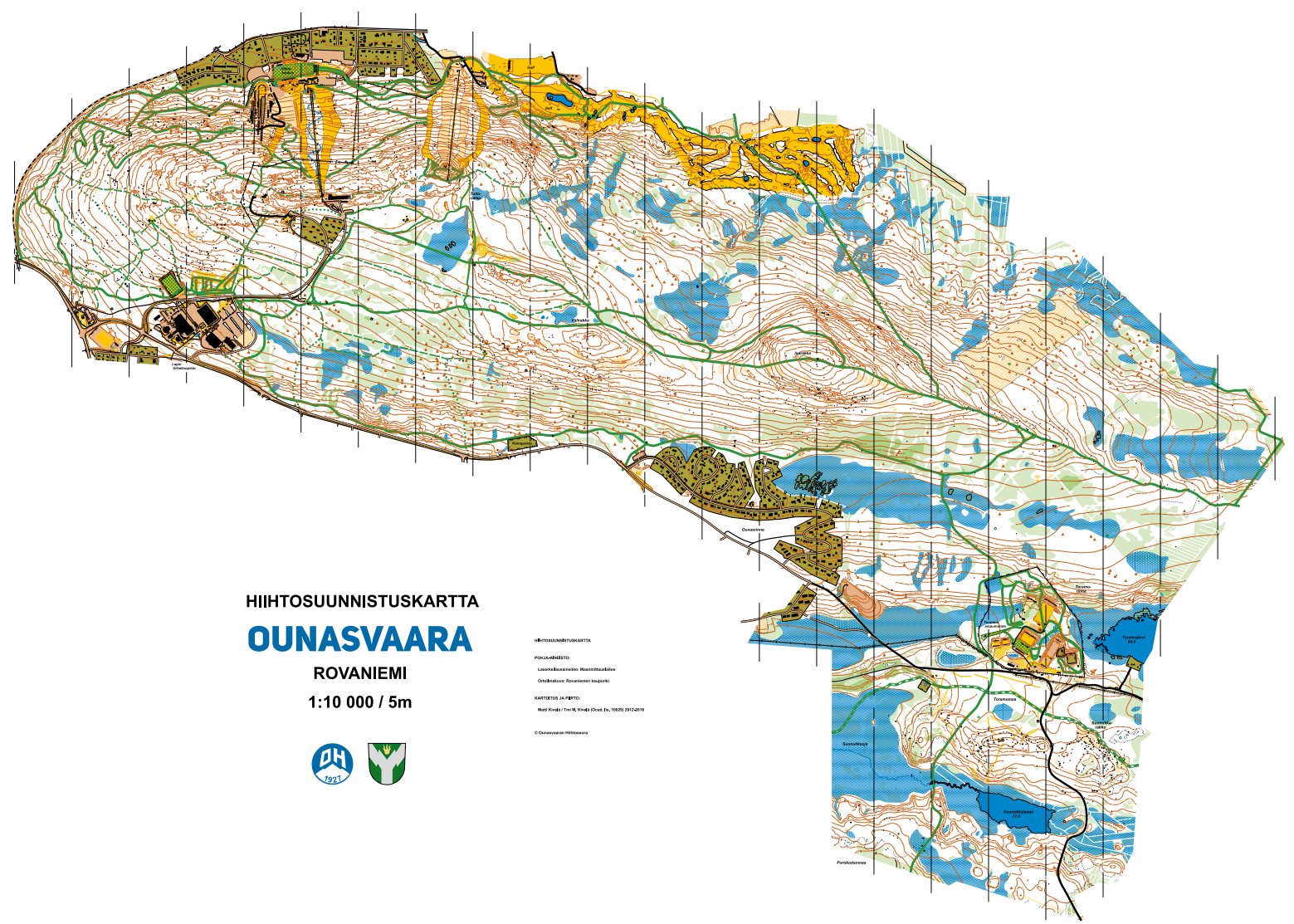
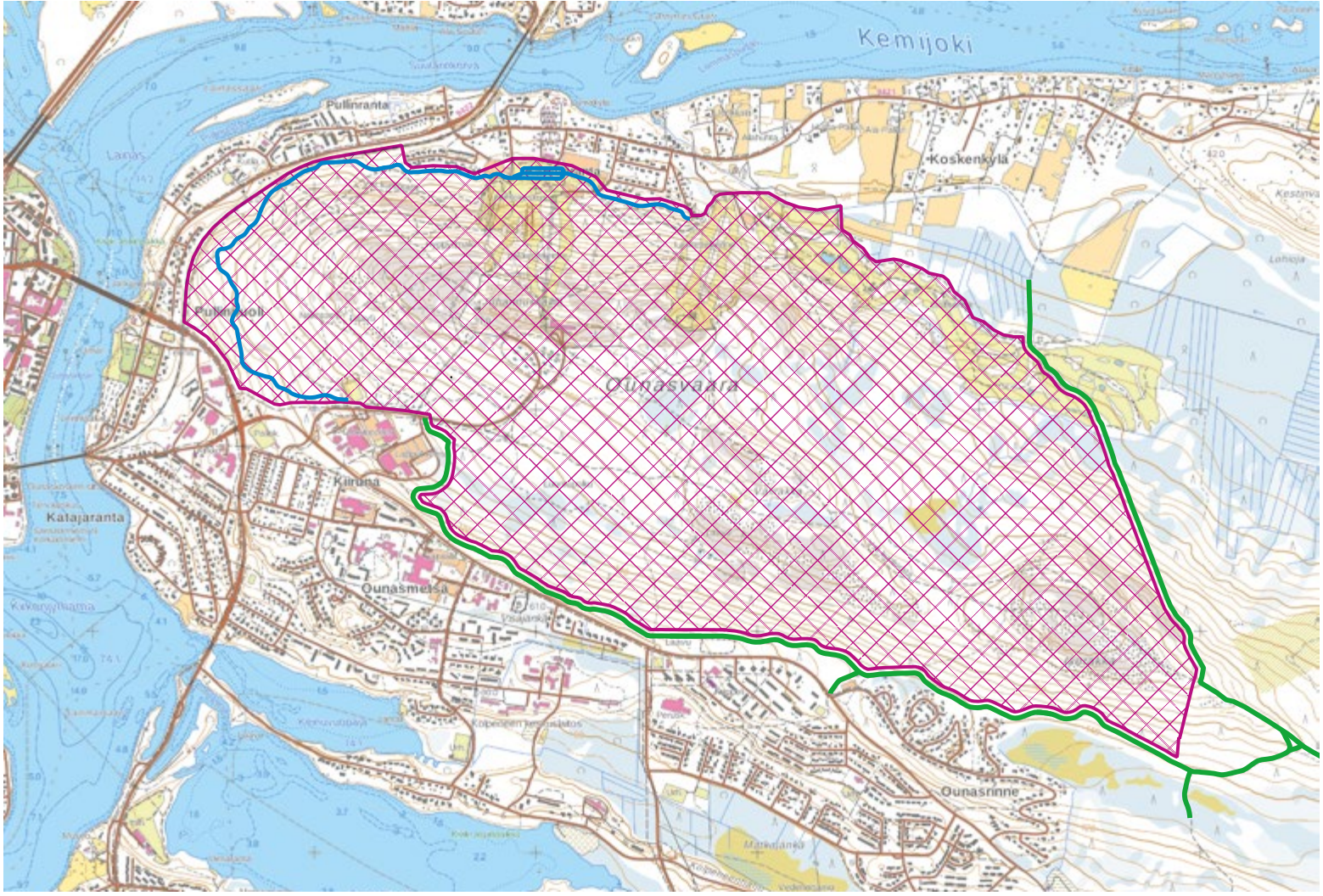
Copies of the most recent versions of the ski orienteering maps of the embargoed areas are published on the event website.

Offences must be reported to the WUC Ski-O 2020 Office, e-mail: [wucskio2020@santasport.fi](mailto:wucskio2020@santasport.fi).

**Embargoed area of WUC Ski-O 2020 and previous maps:**











# Event center & athletes village

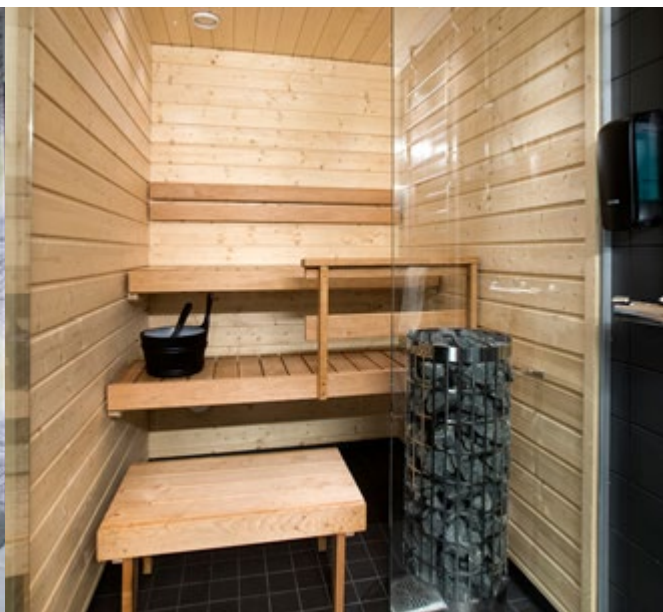
The Event center / Athletes Village of the Championship is located in Santasport Olympic training center. Santasport will offer accommodation, catering services, sport facilities and meeting rooms for all participants.

*Athletes' Village will be open from Saturday 20th till 28th of March 2020. Arrivals of the teams prior to the opening of the race office is possible. Please advise the championship organisers of the team arrival date.*

## Accommodation

Santasport center offers more than 500 beds in apartment hotel, sport hotel and in dormitories, everything on the same yard.

All participants will be accommodated in double, 4-person or 6-person room. In an apartment hotel, the rooms are allocated for 2 to 4 persons.



## Catering

Santasport restaurants and café will serve during the Championships. Restaurant offers daily breakfast, lunch and dinner for all participants, officials and guests.

## TRANSPORTATION

Despite its northern location, getting to Rovaniemi is easy. The city is well connected via various means of transport. Transport networks by air, rail and road are comprehensive and reliable. The main gateway is Helsinki-Vantaa International Airport. Daily flights between Rovaniemi and Helsinki are operated throughout the year. Rovaniemi is also easy to reach by rail. There are several trains running to and from other Finnish cities every day.

All venues and services of the championship are located close to each other, so there is no need for transportation during the event. Organising Committee will organise transportation from the Rovaniemi airport to the Santasport Olympic Training Center according to the travel schedules provided by the participating countries. The organising committee will also discuss with Finnair about possible alterations of capacity based on demand.

You can find Finnair flights here: **[www.finnair.com](http://www.finnair.com)**

Also Norwegian operates daily from Helsinki to Rovaniemi. **[www.norwegian.com](http://www.norwegian.com)**

## INFORMATION AND MEDIA

The official website for WUC Ski Orienteering Championship will be found at [wucskio2020.com](http://wucskio2020.com). There you can find updated news and information about the event. On social media, the Championship will be found on Facebook and Instagram.

**Facebook: 2020 FISU WUC Ski Orienteering**

**Instagram: 2020 FISU WUC Ski Orienteering**







## 1. Main building

- RECEPTION
- SPORT HALL
- BOWLING ALLEY
- POOL AREA
- RESTAURANTS

## 2. Venue

## Distances

CITY CENTRE	2,5 KM
ARCTIC CIRCLE	10 KM
AIRPORT	10 KM
SANTA CLAUS VILLAGE	10 KM

[santasport.fi/en](https://santasport.fi/en)

## CONTACT

Inquiries [wucskio2020@santasport.fi](mailto:wucskio2020@santasport.fi)  
Web Page [wucskio2020.com](http://wucskio2020.com)  
Facebook **2020 FISU WUC Ski Orienteering**  
Instagram **2020 FISU WUC Ski Orienteering**

*Secretary General*  
Mr. Jarkko Komulainen  
Santasport, Olympic Training Center Rovaniemi  
Hiihtomajantie 2  
96400 Rovaniemi, FINLAND  
Tel. +358 20 798 4262  
E-mail: [jarkko.komulainen@santasport.fi](mailto:jarkko.komulainen@santasport.fi)

**Welcome to the Arctic Circle  
and WUC Ski-O 2020!**

**ROVANIEMI IS EASILY AND  
QUICKLY ACCESSIBLE**

Helsinki - Rovaniemi 1 hour by air  
Rovaniemi airport - Santasport  
10 minutes

**WORLD UNIVERSITY SKI ORIENTEERING**

**CHAMPIONSHIP**